

Model Overview



***Temperature measuring
instruments***

Bimetal thermometers



case	stainless steel
ring	crimped-on ring stainless steel
model / case filling	TBiSChg / without case filling TBiSChgG / with case filling
accuracy class / nominal case size	class 1 NCS 63, 80, 100, 125, 160 (2½", 3", 4", 5", 6")
stem	stainless steel
temperature ranges	temperature differences of 60 K to 600 K



case	stainless steel
ring	bayonet ring stainless steel
model / case filling	TBiSCh / without case filling
accuracy class / nominal case size	class 1 NCS 63, 100, 160 (2½", 4", 6")
stem	stainless steel
temperature ranges	temperature differences of 60 K to 600 K



case	stainless steel
ring	crimped-on ring stainless steel
model / case filling	TBiGelChg / without case filling TBiGelChgG / with case filling
accuracy class / nominal case size	class 1 NCS 63, 80, 100, 125, 160 (2½", 3", 4", 5", 6")
stem	stainless steel
temperature ranges	temperature differences of 60 K to 600 K



case	stainless steel
ring	crimped-on ring stainless steel
model / case filling	TBiGelChg / without case filling TBiGelChgG / with case filling
accuracy class / nominal case size	grade A ± 1% of the measuring range
stem	stainless steel
temperature ranges	span from 110 °F to 900 °F



case	stainless steel
ring	bayonet ring stainless steel
model / case filling	TBiGelCh / without case filling
accuracy class / nominal case size	class 1 NCS 63, 100, 160 (2½", 4", 6")
stem	stainless steel
temperature ranges	temperature differences of 60 K to 600 K



case	stainless steel
ring	crimped-on ring stainless steel
model / case filling	TSChg / without case filling TSChgG / with case filling
accuracy class / nominal case size	class 1 NCS 63, 80, 100, 160 (2½", 3", 4", 6")
stem	stainless steel
temperature ranges	temperature differences of 80 K to 600 K



case	stainless steel
ring	bayonet ring stainless steel
model / case filling	TSCh / without case filling TSChG / with case filling
accuracy class / nominal case size	class 1 NCS 63, 100, 160, 250 (2½", 4", 6", 10")
stem	stainless steel
temperature ranges	temperature differences of 80 K to 600 K



case	stainless steel
ring	crimped-on ring stainless steel
model / case filling	TGeIChg / without case filling TGeIChgG / with case filling
accuracy class / nominal case size	class 1 NCS 63, 80, 100, 160 (2½", 3", 4", 6")
stem	stainless steel
temperature ranges	temperature differences of 80 K to 600 K



case	stainless steel
ring	bayonet ring stainless steel
model / case filling	TGeICh / without case filling TGeIChG / with case filling
accuracy class / nominal case size	class 1 NCS 63, 100, 160 (2½", 4", 6")
stem	stainless steel
temperature ranges	temperature differences of 80 K to 600 K



case	stainless steel
ring	crimped-on ring stainless steel
model / case filling	TFChg / without case filling TFChgG / with case filling
accuracy class / nominal case size	class 1 NCS 63, 80, 100, 160 (2½", 3", 4", 6")
stem	stainless steel
temperature ranges	temperature differences of 80 K to 600 K



case	stainless steel
ring	bayonet ring stainless steel
model / case filling	TFCh / without case filling TFChG / with case filling
accuracy class / nominal case size	class 1 NCS 63, 100, 160, 250 (2½", 3", 4", 10")
stem	stainless steel
temperature ranges	temperature differences of 80 K to 600 K

Special gas-actuated thermometers



case	steel galvanised
ring	front narrow rim black
model / case filling	TFQS / without case filling
accuracy class / nominal case size	class 1 NCS 96x96, 144x144
stem	stainless steel
temperature ranges	temperature differences of 80 K to 600 K



case	stainless steel
ring	crimped-on ring stainless steel
model / case filling	TAS / with case filling
accuracy class / nominal case size	class 1 NCS 63, 80, 100 (2½", 3", 4")
stem	stainless steel
temperature ranges	0 - 120 °C 50 - 650 °C



case	stainless steel
ring	crimped-on ring stainless steel
model / case filling	TAF / with case filling
accuracy class / nominal case size	class 1 NCS 63, 80, 100 (2½", 3", 4")
stem	stainless steel
temperature ranges	0 - 120 °C 50 - 650 °C

Special gas-actuated thermometers



case	stainless steel
ring	bayonet ring stainless steel
model / case filling	TRCh / without case filling
accuracy class / nominal case size	class 1 NCS 100, 160 (4", 6")
stem	stainless steel
temperature ranges	-40 / +40 °C -30 / +50 °C -20 / +60 °C

Machine glass thermometers



upper part	A
dimension	110 x 30
models	VA2, HA2, SA2
construction type	V (straight) H (angle 90°) S (angle 135°)
process connection	screw-in connection
stem material	brass



upper part	B
dimension	150 x 36
models	VB2, HB2, SB2
construction type	V (straight) H (angle 90°) S (angle 135°)
process connection	screw-in connection
stem material	brass



upper part	C
dimension	200 x 36
models	VC2, HC2, SC2
construction type	V (straight) H (angle 90°) S (angle 135°)
process connection	screw-in connection
stem material	brass



upper part	C
dimension	200 x 36
models	VC3, HC3, SC3
construction type	V (straight) H (angle 90°) S (angle 135°)
process connection	union nut
stem material	tube St 35, fitting brass 300°C and above: tube stainless steel fitting brass



upper part	C
dimension	200 x 36
models	VC4, HC4, SC4
construction type	V (straight) H (angle 90°) S (angle 135°)
process connection	union nut
stem material	1.4571 fitting brass

Thermometers with electrical additional accessory



case	stainless steel
ring	bayonet ring stainless steel
model / case filling	TSCh / without case filling TSChOe / with case filling oil
special equipment	limit switch contact assembly S/M, I, E and P
accuracy class / nominal case size	class 1 NCS 100, 160 (4", 6")
stem	stainless steel
temperature ranges	temperature differences of 80 K to 600 K



case	stainless steel
ring	bayonet ring stainless steel
model / case filling	TGeCh / without case filling
special equipment	limit switch contact assembly S/M, I, E and P
accuracy class / nominal case size	class 1 NCS 100, 160 (4", 6")
stem	stainless steel
temperature ranges	temperature differences of 80 K to 600 K

Thermometers with electrical additional accessory



case	stainless steel
ring	bayonet ring stainless steel
model / case filling	TFCh / without case filling TFChOe / with case filling oil
special equipment	limit switch contact assembly S/M, I, E and P
accuracy class / nominal case size	class 1 NCS 100, 160 (4", 6")
stem	stainless steel
temperature ranges	temperature differences of 80 K to 600 K



case	steel galvanised
ring	front narrow rim black
model / case filling	TFQS / without case filling
special equipment	limit switch contact assembly S/M, I, E and P
accuracy class / nominal case size	class 1 NCS 96x96, 144x144
stem	stainless steel
temperature ranges	temperature differences of 80 K to 600 K



case	stainless steel
ring	bayonet ring stainless steel
model / case filling	TRCh / without case filling
special equipment	limit switch contact assembly S/M, I, E and P
accuracy class / nominal case size	class 1 NCS 100, 160 (4", 6")
stem	stainless steel
temperature ranges	-40 / +40 °C (-40 / 104 °F) -30 / +50 °C (-22 / 122 °F) -20 / +60 °C (-4 / 140 °F)

Special stems for gas-actuated thermometers



stem model	A3.2, A4.2 or A4.3
process connections	A3.2: union nut A4.2: male thread turnable A4.3: male thread rigid
vessel	stainless steel
capillary line	stainless steel
connection screw fitting	stainless steel

suitable for difficult installation conditions and overlong thermowells

Special stems for gas-actuated thermometers



stem model	A2, A7 or A7.1
process connections	A2 : union nut, lateral retaining screw A7 : male thread turnable, double male adapter, lateral retaining screw A7.1: male thread turnable, double male adapter, clamp-connection at capillary line
vessel	stainless steel
capillary line	stainless steel
connection screw fitting	stainless steel

uitable for difficult installation conditions and overlong thermowells



stem model	A20.3, A20.1, A20.11, A20.12 or A20.6
stem	stainless steel, 1.4435
process connections	A 20.3 : conical coupling and groove nut, DIN 11 851 A 20.1 : Clamp ISO 2825 A 20.11: Clamp DIN 32 676 A 20.12: Tri-Clamp A 20.6 : Varivent® for Varinline®-case
special equipment	wetted surface electropolished, Ra < 0.8 µm stem end and shapes rounded



stem model	A 1.1 installation surface plain A 1.2 installation surface convex
stem	stainless steel

Thermowells



construction type	solid drilled
process connection	for welding
connection to thermometer stem	female thread
model	SF 4
material	stainless steel



construction type	solid drilled
process connection	for welding
connection to thermometer stem	male thread
model	SF 4.1
material	stainless steel



construction type	solid drilled
process connection	connection flange
connection to thermometer stem	female thread
model	SF 4F
material	stainless steel



construction type	solid drilled
process connection	connection flange
connection to thermometer stem	male thread
model	SF 4.1F
material	stainless steel



construction type	fabricated
process connection	male thread
connection to thermometer stem	female thread
model	SF 5
material	– stainless steel – brass



construction type	solid drilled
process connection	male thread SF6: G ½ B or G ¾ B SF7: ½" NPT or ¾" NPT
connection to thermometer stem	female thread
model	SF6 SF7
material	– stainless steel – 1.7335 (CroMo 4-5)



construction type	fabricated
process connection	male thread
connection to thermometer stem	male thread
model	SF8
material	stainless steel



construction type	solid drilled
process connection	male thread
connection to thermometer stem	male thread
model	SF 9
material	– stainless steel – 1.7335 (CroMo 4-5)



construction type	fabricated
process connection	male thread
connection to thermometer stem	clamping ring fitting
model	SK 1
material	stainless steel



construction type	solid drilled
process connection	male thread
connection to thermometer stem	clamping ring fitting
model	SK 2
material	stainless steel



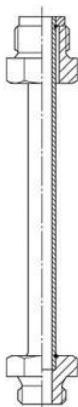
construction type	fabricated
process connection	male thread
connection to thermometer stem	with lateral retaining screw
model	SK 3.B
material	stainless steel



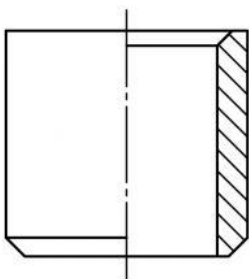
construction type	solid drilled
process connection	for welding
connection to thermometer stem	with lateral retaining screw
model	SK 4.B
material	stainless steel

construction type	fabricated	
models / process connections	SL 1 clamp-connection	ISO 2852
	SL11 clamp-connection	DIN 32 676
	SL12 Tri-clamp-connection	
	SL 3 conical coupling / groove nut	DIN 11 851
	SL 6 Varivent® for Varinline®-case	
connection to thermometer stem	male thread	
material	stainless steel	
special equipment	wetted surface electropolished, Ra < 0.8 µm thermowell end and shapes polished	

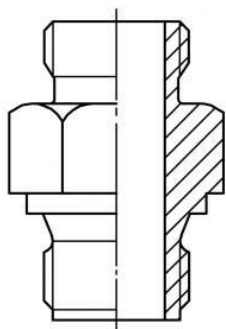
Accessory according to DIN 43772 for thermowells



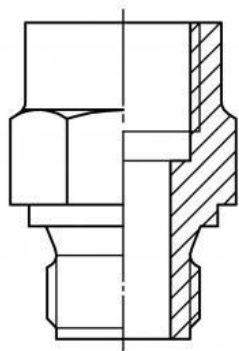
application	distance extension between process connection and instrument head e.g. for the bridging of insulating material.
process connection	male thread
connection to thermometer stem	male thread
model	HR
material	stainless steel



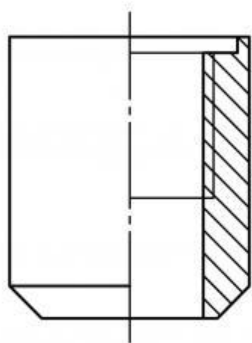
application	process connection for welding thermowells according to DIN 43 772
model	S2
material	stainless steel



application	thread adapter
connections	2 x male thread
model	AV 1
material	stainless steel



application	thread adapter
connections	female- / male thread
model	AV 2
material	stainless steel



application	Welding pieces with female thread for thermometer stem and thermowells
connections	female thread / welding pieces
model	S 1
material	stainless steel



Company:	Limit Africa pty(ltd)
Physical Address:	cnr Berguis & Erasmus STR, Secunda, 2302
Postal Address:	P.O.Box 15011, Secunda, 2302
Tel Number:	(017) 634 4852
Registration Number:	2005/000670/07
VAT Number:	4750220784